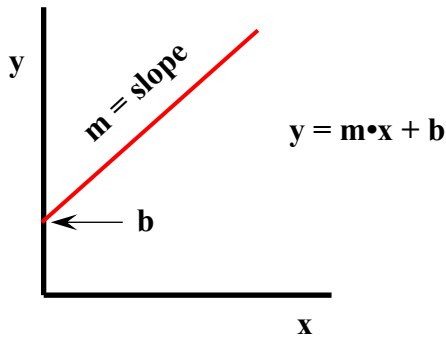


Linear

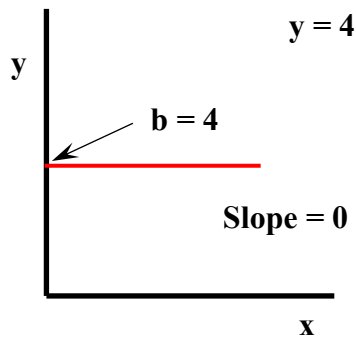


x	y
0	4
1	6
2	8
3	10
4	12
5	14

Linearly Related:

When x changes by a certain amount (1 unit), the value of y always changes by the same amount (e.g., 2 units).

Non- or Constant Relationship



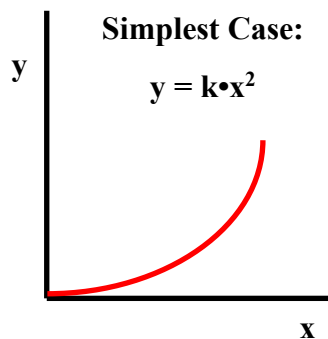
x	y
0	4
1	4
2	4
3	4
4	4
5	4

Non-Relationship

Changes in the value of x have no effect upon the value of y

The y value is a constant.

Quadratic



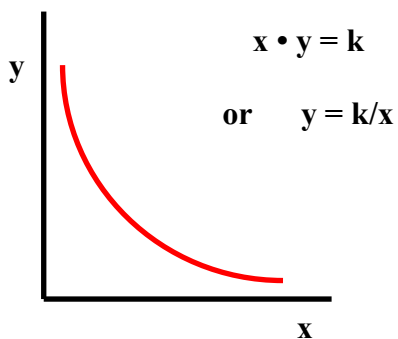
x	y
0	0
1	2
2	8
3	18
4	32
5	50

Quadratic (Simplest Case)

Double x ... Quadruple y

Triple x ... Nine times y

Inverse



x	y
1	12
2	6
3	4
4	3
5	2.4
6	2

Inverse

Double x ... Halve y

Quadruple x ... one-fourth y